

# BP PROJECTS PVT. LTD.

---



AN I.S.O. 9001 & 14001 CERTIFIED COMPANY



*From*

## **THE DESK OF CHAIRMAN**

I am very happy to be able to introduce this catalogue. It is an accumulation of experience acquired over many years. The range of products it contains is the result of experience.

I feel that this range is the most appropriate to meet the varied standards and needs.

For large order BPP is prepared design and produce, according to your requirements, any product which you are unable to find this catalogue.

It is not only BPP's products range that BPP have attempted to convey, but also BPP, a company which has endeavoured to give an ever improving service to the customers for the years to come.

It is my firm belief that with BPP's expanded capacities and leadership status the outlook is bright. Cost optimization measures strategic planning, effective financial management and consolidated quality production assure BPP's secured and prosperous future.

To remain a leading company in HIGH MASTS, a well-crafted strategy has been put in force. The company's intention is to sustain its position. To attain this goal BPP plans to work towards enhancing capital and manpower productivity, besides an unrelenting focus on customer service .

It is only through manpower's dedication and commitment that BPP has been able to deliver superior results. BPP family believes that its people are its backbone.

Marketing network has been given a shot in the arm. BPP's HIGH MASTS have become more visible today because of sensible marketing strategy and hard work of associated concerns.

BPP is confident of sustaining superior performance, thereby moving forward. In all its operations, BPP will continue to focus on improving asset utilisation through market expansion as well as margin improvement through internal efficiencies and cost control measures. Armed with these measures and proactive strategies, BPP is confident of delivering superior quality to its customers.

**Bhola Jaiswal**

We proudly introduce ourselves as the indigenous Manufacturer of High Masts. We have successfully used our high masts in different fields, such as street lighting, oil depot lighting, stadium lighting, apron lighting, port lighting, telecommunication (cellular network operators), wind turbine & many other places, We produce Masts / Poles ranging from 3 mtrs. to 73 mtrs.

(All heights suitable to install light fittings 6 / 9 / 12 / 18 / 24 / 32 / 112 nos as per customer's needs. The most important aspect in our product is that it is completely indigenous and with complete Indian technology derived with an extensive research by a team of specialized engineers & personally since 1994.

The design has been appreciated and approved by I.I.T Kharagpur & Jadavpur University. We have a in house design & drawing facility, which enables us to make a continuous research & development . This has lead to certain advantages as compared to other foreign manufacturer in High Mast system with mobile lantern carriage



## Advantages :

- a) We can provided single longitudinally welded MAST on request.
- b) Minimum thickness is not less than 4 mm unlike other foreign manufacturers of 3 mm.
- c) Lantern carriage has a 3 point suspension system with perfect balance
- d) The double drum, winch has an compentiating disc, by virtue of which the tilt of the lantern carriage can be straightened without lowering the carriage ring.
- e) The 3 pulley system is provided with guide to prevent wire & cable slip off in any position.
- f) Torquelimiter and limit switch provided for self motor trip off during docking of lantern carriage.
- g) Our Mast are Hot Dipped Galvanizing in Single Dip Process in our in house Galvanizing Plant up to 14 Mtrs. Long Sections.



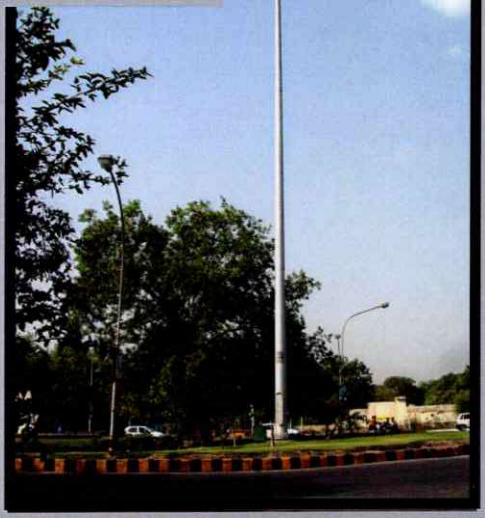
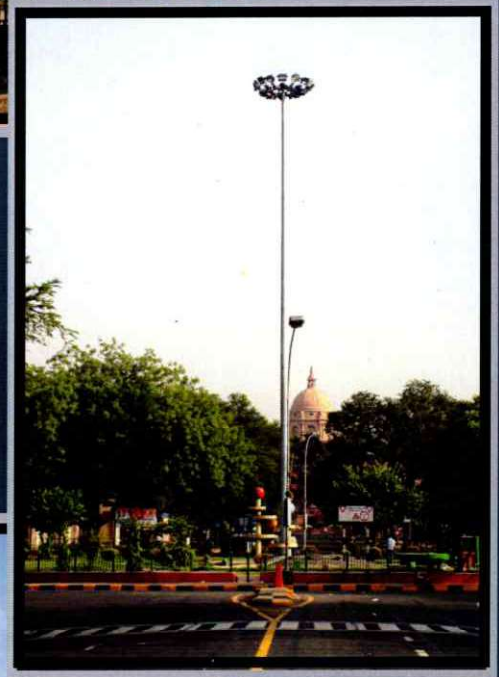
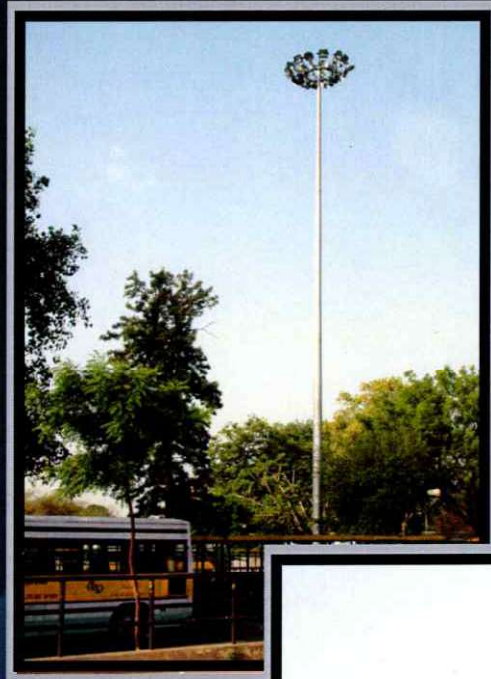
# TECHNICAL PARAMETERS OF BPP'S HIGH MAST

16. 12 Luminaries :	30 Mtr	25 Mtr	20 Mtr	16 mtr	12.5 mtr .
# Make	BPP	BPP	BPP	BPP	BPP
# Material Construction	BSEN - 10025	BSEN - 100125	BSEN -10025	BSEN - 10025	BSEN -10025
# Cross section of mast in polygon ( No. of sides )	20 Sided	20 Sided	20 Sided	20 Sided	12 Sided
# Thickness in mm	5,4,4	5,4,4,	4,3	4,3	3,3
# Length of individual sections (mm)	10,500/10,500/10,500	8,875/8,875/8,875	10,375/ 10,375	8,375/8,375	6,500/6,500
# Base dia & Top diameter	600 mm / 150 mm	485 mm /150 mm	450 mm / 150 mm	450 mm/ 150 mm	340 mm / 150 mm
# Type of joints	Telescopic slip joint	Telescopic slip joint	Telescopic slip joint	Telescopic slip joint	Telescopic slip joint
# Length of overlap (joint at site mast section in mm )	1.5 times the dia	1.5 times the dia	1.5 times the dia	1.5 times the dia	1.5 times the dia
# Metal protection treatment of fabricated mast section	Hot Dip Galvanized	Hot Dip Galvanized	Hot Dip Galvanized	Hot Dip Galvanized	Hot Dip Galvanized
# Thickness of galvanization (minimum)	86 micron	86 micron	86 micron	86 micron	86 micron
# Size of opening door at base (mm)	1200 X 250 mm	1200 X 250 mm	1200 X 250 mm	1200 X 250 mm	1200 X 250 mm
# Type of locking arrangement & door construction	Anti Vandalism Type	Anti Vandalism Type	Anti Vandalism Type	Anti Vandalism Type	Anti Vandalism Type
# Details of stack board inside	Wooden Basr Board .	Wooden Basr Board .	Wooden Basr Board .	Wooden Basr Board .	Wooden Basr Board .
# Size, material & thickness of cable Termination box (mm)	150 x 150	150 x 150	150 x 150	150 x 150	150 x 150
# Size of Base Plate diameter (mm)	840 mm	730 mm	670 mm	670 mm	540 mm
# Size of Base Plate thickness (mm)	30 mm	25 mm	25 mm	25 mm	20 mm
# Size of Anchor Plate diameter (mm)	840 mm	730 mm	670 mm	670 mm	540 mm
# Size of Anchor Plate thickness (mm)	4 mm	4 mm	4 mm	4 mm	4 mm
# Details of Template	Same as Anchor plate	Same as Anchor plate	Same as Anchor plate	Same as Anchor plate	Same as Anchor plate
# Weights in kgs of 30 mtrs high mast (including base plate, door head frame etc.)	1500 kg approx	1200 kg approx	1000 kg approx	800 kg approx	450 kg approx .
<b>17. Dynamic loading as prevailing actual at site :</b>					
Maximum wind pressure ( Basic Wind Speed)	180 km / hr	180 km/ hr	180 km / hr	180 km/hr	180 km/ hr
# Maximum gust speed time	3 seconds	3 seconds	3 seconds	3 seconds	3 seconds
# Height above ground level at which above two factors are measured	THROUGHOUT THE MAST INCLUDING THE PROJECTED AREAS OF LUMNAIRES				
# Factor of safety for wind load	1.25	1.25	1.25	1.25	1.25
# Factor of safety for other loads	1.15	1.15	1.15	1.15	1.15
<b>18. Foundation Details :</b>					
# Type of foundation	RCC	RCC	RCC	RCC	RCC
# Size of foundation	AS PER SOIL BEARING CAPACITY.				
# Designed load bearing capacity of soil .	Average soil bearing capacity considered 10 tons/ M. Sq.				
# Design safety factor					
# Considered wind speed (km/hr.)	2	2	2	2	2
# Depth of foundations (mm)	As per Design	As per Design	As per Design	As per Design	As per Design
# Average soil bearing capacity	TO BE CHECKED CONSIDERED 10 TONS/M.SQ.				
# Number of Foundation Bolts	16 nos	12 nos	12 nos	8 nos	6 nos
# PCD of Foundation Bolts (mm)	740 mm	650 mm	590 mm	590 mm	440 mm
# Type of Foundation Bolts	Tor steel (410 Mpa Y.S)	Tor steel (410 Mpa Y.S)	Tor steel (410 Mpa Y.S)	Tor steel (410 Mpa Y.S)	Tor steel (410 Mpa Y.S)
# Bolt diameter (mm)	32 mm	32 mm	32 mm	32 mm	25 mm

# HIGH MAST

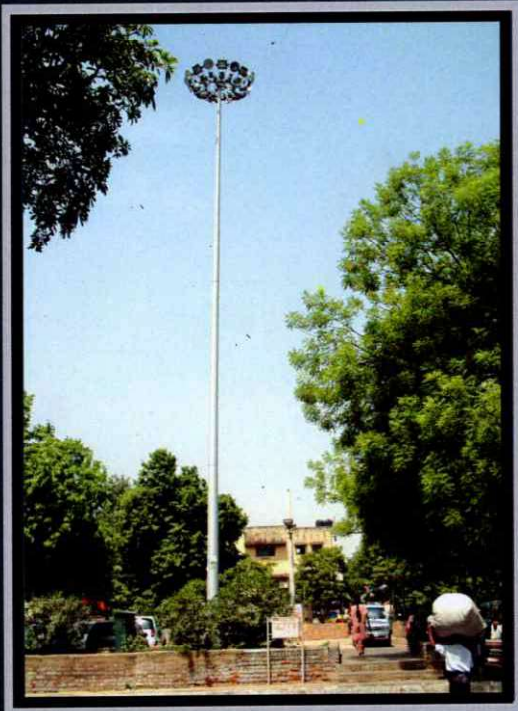


# HIGH MAST



# HIGH MAST

---



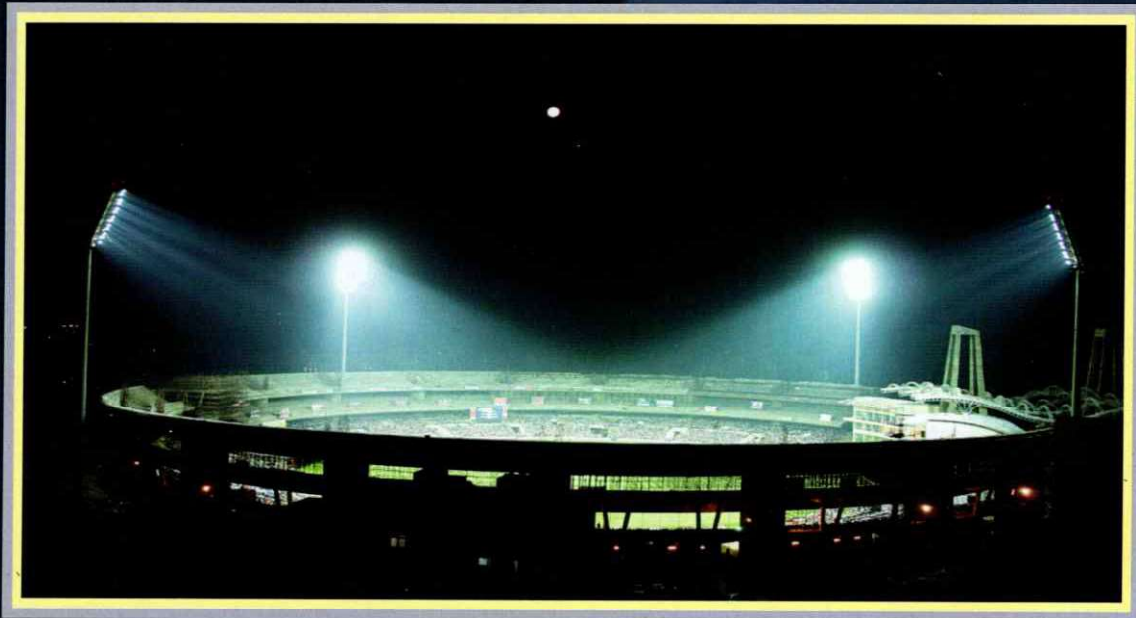
# STADIUM MAST



PANCHKULA CRICKET STADIUM (CHANDIGARH)



FIROJ SHAH KOTLA CRICKET STADIUM ( DELHI )



DR. DY. PATIL SPORTS ACADEMY( NAVI MUMBAI )



POTHINAMALLAYYAPA CRICKET STADIUM (VISAC)



GURGAON CRICKET STADIUM

# STADIUM MAST



ABHIMANYU CRICKET STADIUM (DEHRADUN)



BARASAT FOOT BALL STADIUM (KOLKATA)



TAU DEVILAL SPORTS COMPLEX (GURGAON)



Dr. AMBEDKAR FOOTBALL STADIUM (GURGAON)

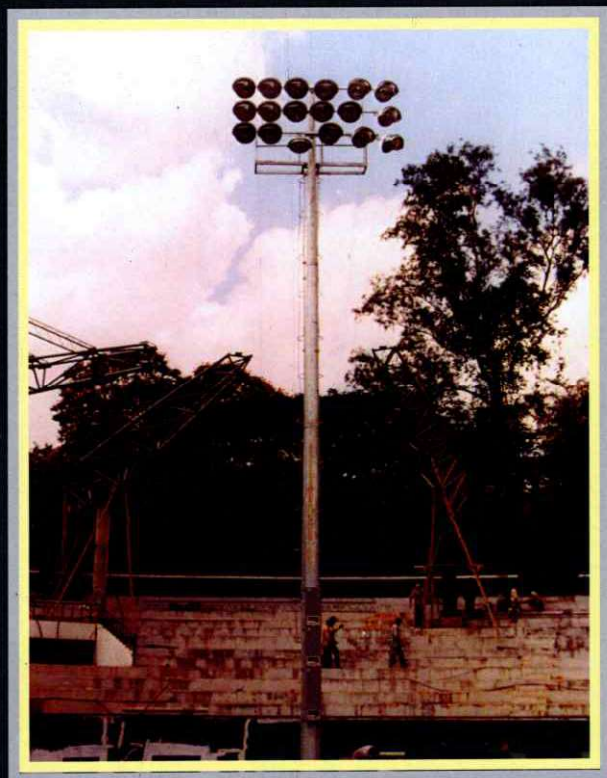


DEVENGIRI LAWN TENNIS STADIUM (BANGALORE)

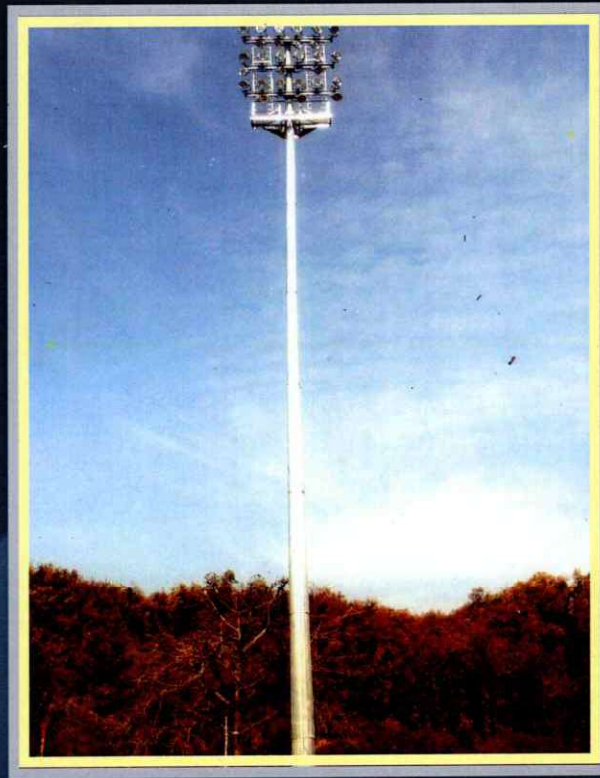


DHARMASALA CRICKET STADIUM ( HIMACHAL PRADESH)

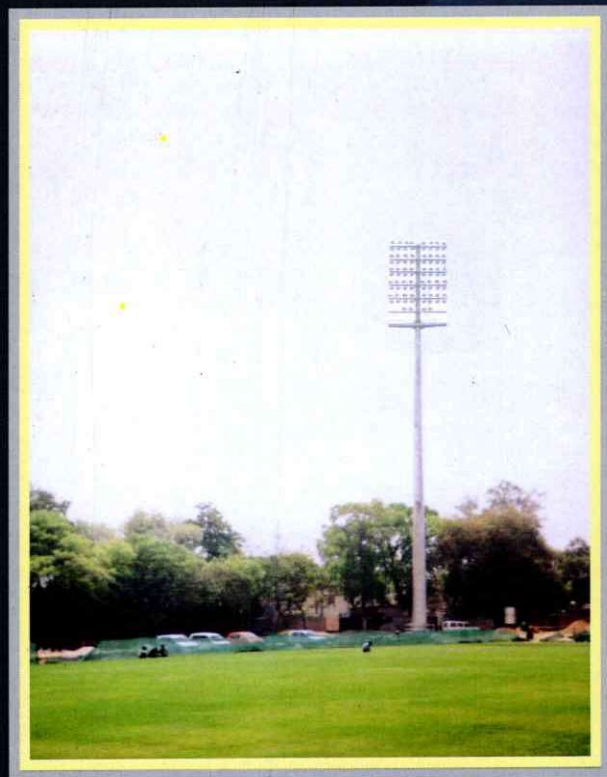
# STADIUM MAST \_\_\_\_\_



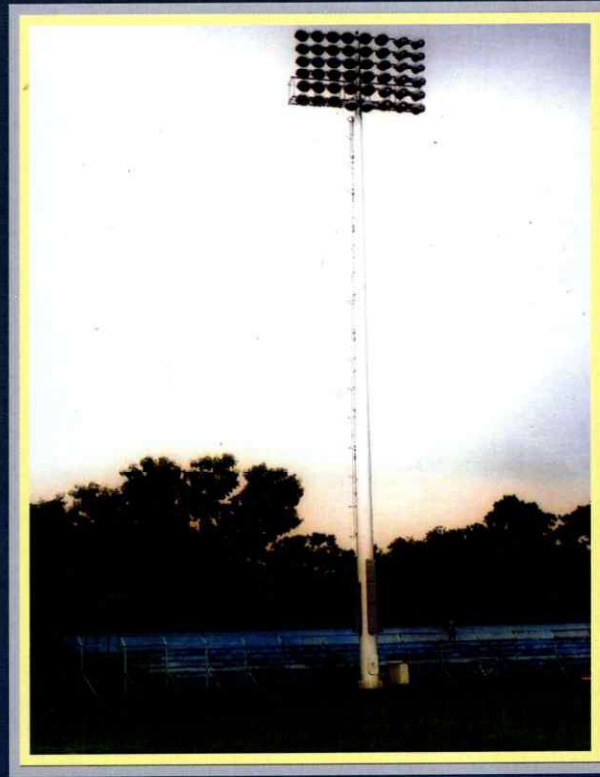
CUBBEN PARK LAWN TENNIS STADIUM(BANGALORE)



DSA STADIUM (SILCHAR)

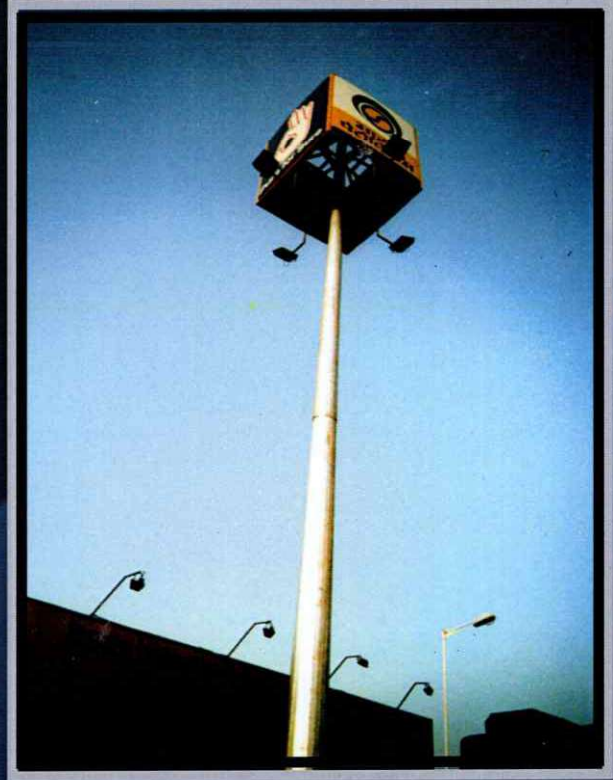


DELHI UNIVERSITY STADIUM (DELHI)



JAHARLAL NEHERU HOCKEY STADIUM (SILCHAR)

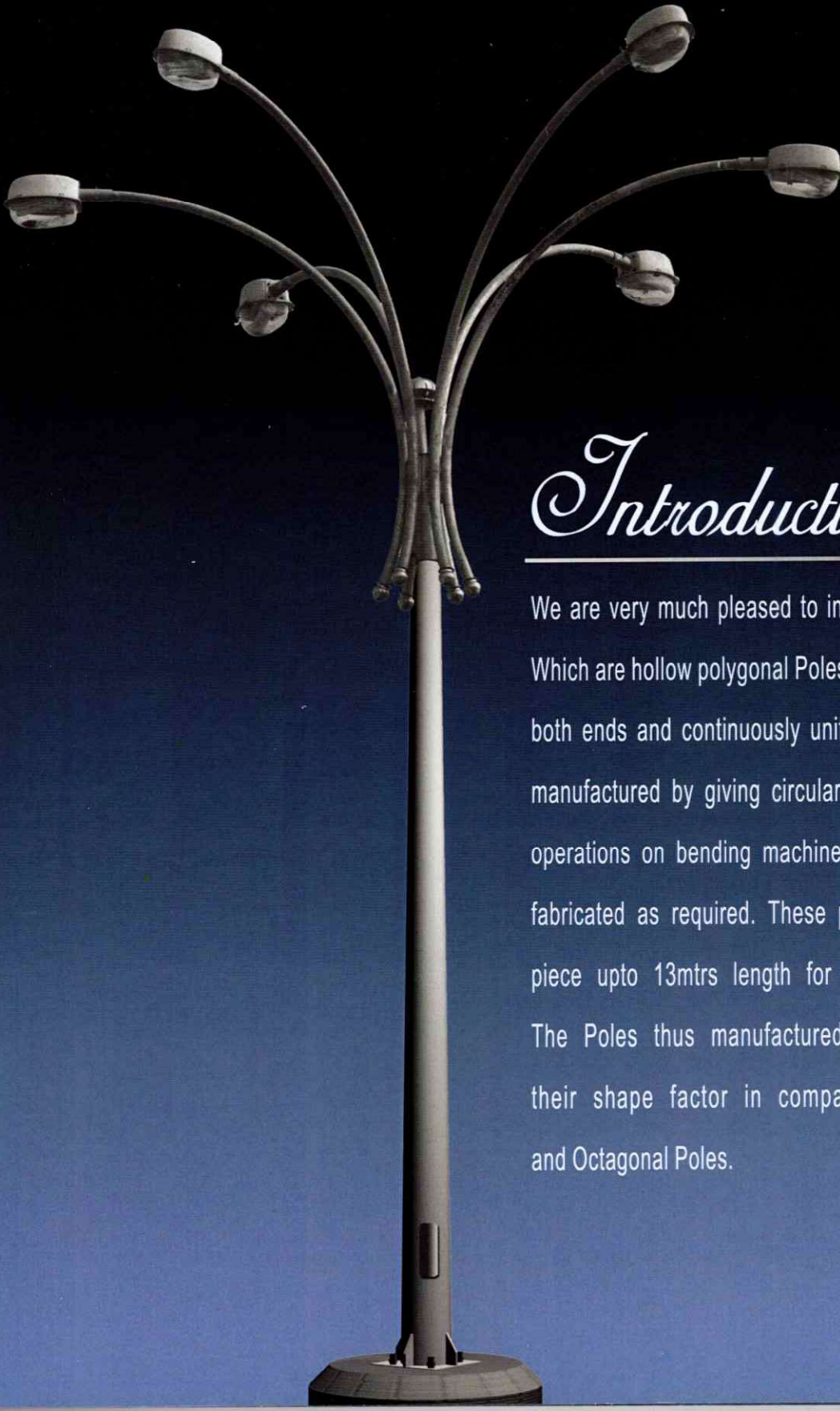
# SIGNAGE MAST \_\_\_\_\_



# *Introducing*

## Our Latest Designing Conical Poles Octagonal Poles & Brackets

---



### *Introduction*

---

We are very much pleased to introduce our new product Conical Poles. Which are hollow polygonal Poles having closely Circular Cross Section at both ends and continuously uniformly tapered in shape. This poles are manufactured by giving circular shape to the sheet metal by pressing operations on bending machines , and then subsequently welded and fabricated as required. These poles are hot dip Galvanized in single piece upto 13mtrs length for anti corrosive & anti rust protection. The Poles thus manufactured have a very high strength due to their shape factor in comparison to conventional SwagedPoles and Octagonal Poles.

# GENERAL COMPARISON BETWEEN SWAGED POLE /OCTAGONAL POLE & GALVANIZED CONICAL POLE :-

SWAGED / OCTAGONAL POLE	CONICAL POLE
1. Swaged welded poles are generally non galvanized and are prone to rusting / Corrosion, Subsequently breaking from the areas where regular painting is not possible. The areas embedded in the ground with the concrete are exposed to atmospheric condition & allows the corrosion on the poles due to water seepage.	Galvanized Conical Pole are mounted above the ground and will not rust due to hot dip galvanized protection.
2. It is technically not possible to properly galvanize Swaged welded poles because though the Outer surface of the swaged welds are sealed the inner portions cannot be welded. So there is every chance of trapped acids being left over in the internal portions of the swaged joints during course of 7 tank process of galvanizing. Accelerated corrosion due presence of acids leads to premature failure from swaged joints.	Conical poles due to there continuos tapering and made from one length of sheet has no such problem.
3. Swaged welded poles as per IS standards which have generally 165mm dia at the lower portion have very difficulty in having flushed type reinforced internal doors for JB box mounting, in some cases external pipe reinforcement are done to get internal doors which may lead to same problem as discussed in point no-2	The conical poles of all categories have internal flushed type doors.
4. The Swaged poles are generally made from steel with UTS of 410 MPA. Because the pipes available in the market are made up of commercial grade steel.	The conical poles are made up of HR Coils which can easily be procured of high tensile grade of 490 MPA. This increases the safety factor of the pole
5. Swaged welded poles are planted underneath the ground as per IS standards & are not possible to be shifted and reused.	Conical pole can be very easily shifted and reused.
6. We feel the swaged welded poles have inferior aesthetics over Conical poles.	The aesthetics of the conical poles are much better than swaged welded poles.
7. Octagonal poles have lesser strength as compare to conical poles of same identical dimensional parameters.	Conical pole have appx 30% more strength than octagonal pole of same bottom and top dia

# BPP SMART CONICAL POLES

S.NO.	Pole Type	Hight (Mtr)	Top Dia.	Bottom Dia.	Sheet Thickness	Base Plate Dimensions (LxBxT)	Bolt Size (no.xdia)	Pitch Circle Dia.	Foundation Bolt Length	Projected Bolt Length	Anchor Plate Thickness	Size of the Door	Height of the door above base
1	BPC 5 3 150 1	5	90	150	3	310x310x12	4x25	310	500	140	3	75x250	500
2	BPC 5 4 150 1	5	90	150	4	310x310x12	4x25	310	500	140	3	75x250	500
3	BPC 6 3 175 1	6	90	175	3	310x310x12	4x25	310	600	140	3	75x250	500
4	BPC 6 4 175 1	6	90	175	4	310x310x12	4x25	310	600	140	3	75x250	500
5	BPC 7 3 175 1	7	90	175	3	310x310x16	4x25	310	600	140	3	75x250	500
6	BPC 7 4 175 1	7	90	175	4	310x310x16	4x25	310	600	140	3	75x250	500
7	BPC 8 3 175 1	8	90	200	3	310x310x16	4x25	310	700	140	3	75x250	500
8	BPC 8 4 175 1	8	90	200	4	320x320x16	4x25	320	700	140	3	75x250	500
9	BPC 9 3 175 1	9	90	175	3	310x310x16	4x25	310	700	140	3	75x250	500
10	BPC 9 4 175 2	9	90	175	4	310x310x16	4x25	310	700	140	3	75x250	500
11	BPC 9 3 200 2	9	100	200	3	310x310x16	4x25	310	700	140	3	75x250	500
12	BPC 9 4 200 1	9	100	200	4	310x310x16	4x25	310	700	140	3	75x250	500
13	BPC 10 3 200 2	10	100	200	3	310x310x16	4x25	310	700	140	3	75x250	500
14	BPC 10 4 200 1	10	100	200	4	310x310x16	4x25	310	700	140	3	75x250	500
15	BPC 11 3 175 1	11	90	175	3	310x310x16	4x25	310	700	140	3	75x250	500
16	BP 11 4 175 2	11	90	175	4	310x310x16	4x25	310	700	140	3	75x250	500
17	BPC 11 3 200 3	11	100	200	3	310x310x16	4x25	350	700	140	3	75x250	500
18	BPC 11 4 200 1	11	100	200	4	310x310x16	4x25	350	700	140	3	75x250	500
19	BPC 12 3 240 2	12	110	240	3	350x350x20	4x25	350	700	140	3	75x250	500
20	BPC 12 4 240 1	12	110	240	4	350x350x20	4x25	350	700	140	3	75x250	500
21	BPC 12.5 3 270 2	12	110	270	3	400O/DX20	4x25	400	700	140	3	75x250	500
22	BPC 13 3 270 1	13	110	240	3	350x350x20	4x25	350	700	140	3	75x250	500
23	BPC 13 4 240 2	13	110	240	4	350x350x20	4x25	350	700	140	3	75x250	500
24	BPC 13.5 3 270 1	13.5	110	270	3	400x400x20	4x25	400	800	140	3	75x250	500
25	BP 13.5 4 270 2	13.5	110	270	4	400x400x20	4x25	400	800	140	3	75x250	500

**Kindly Note :**

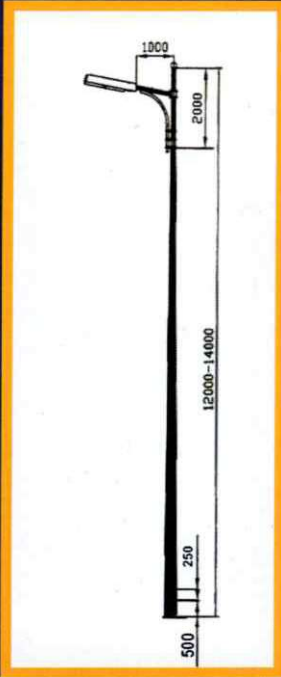
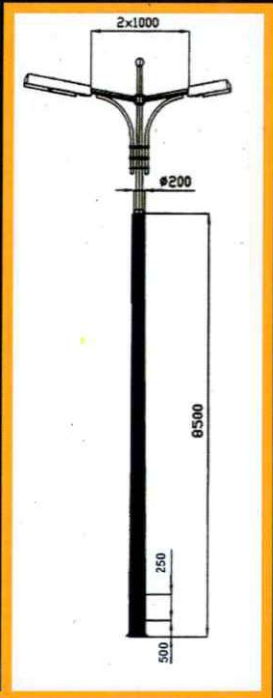
- 1 All poles are conical in shape
- 2 All poles have only single longitudinal weld.
- 3 All poles will be single hot dip galvanised.
- 4 GI conical Poles of any other size & thickness can be made on request.

All dimensions in mm.

# BPP SMART OCTAGONAL POLES

S.No.	Pole Type	Height (Mtr)	Top Dia. (A/F)	Bottom Dia. (A/F)	Sheet Thickness	Base Plate Dimensions (LxBxT)	Bolt Size (no. x dia)	Pitch Circle Dia.	Foundation Bolt Length	Projected Bolt Length	Anchor Plate Thickness	Size of the Door	Height of door above base
1	BP 64 135 1	6	70	135	4	240x240x16	4x25	240	600	140	3	70x500	500
2	BP 43 132 1	4	75	132	3	210x210x12	4x20	210	500	140	3	75x250	500
3	BP 53 132 1	5	75	132	3	210x210x12	4x25	210	500	140	3	75x250	500
4	BP 63 150 1	6	75	150	3	210x210x12	4x25	210	600	140	3	75x250	500
5	BP 73 150 1	7	75	150	3	240x240x16	4x25	240	600	140	3	75x250	500
6	BP 83 150 1	8	75	150	3	240x240x16	4x25	240	700	140	3	75x250	500
7	BP 93 150 1	9	75	150	3	240x240x16	4x25	240	700	140	3	75x250	500
8	BP 93 150 2	9	75	150	3	310x310x16	4x25	310	700	140	3	75x250	500
9	BP 94 175 2	9	75	175	4	310x310x16	4x25	310	700	140	3	75x250	500
10	BP 93 200 1	9	100	200	3	310x310x16	4x25	310	700	140	3	75x250	500
11	BP 94 200 2	9	100	200	4	310x310x16	4x25	310	700	140	3	75x250	500
12	BP 9.5 4 175 1	9.5	75	175	4	350x350x20	4x25	350	700	140	3	75x250	500
13	BP 10 3 175 1	10	75	175	3	310x310x16	4x25	310	700	140	3	75x250	500
14	BP 10 3 200 2	10	75	200	3	310x310x16	4x25	310	700	140	3	75x250	500
15	BP 10 4 200 3	10	75	200	4	350x350x20	4x25	350	700	140	3	75x250	500
16	BP 11 3 240 1	11	110	240	3	350x350x16	4x25	350	700	140	3	75X250	500
17	BP 11 4 240 2	11	110	240	4	350x350x20	4x25	350	700	140	3	75X250	500
18	BP 12 4 240 1	12	110	240	4	350x350x20	4x25	350	700	140	3	75x250	500
19	BP 12 4 270 2	12	110	270	4	400/Dx20	6x25	400	700	140	3	75X250	500
20	BP 13 4 240 1	13	110	240	4	350x350x20	4x25	350	700	140	3	75x250	500
21	BP 13 4 270 2	13	110	270	4	400 O/D x20	6x25	400	700	140	3	75x250	500
22	BP 13.5 4 270 1	13.5	110	270	4	400X400X20	4x25	400	700	140	3	75x250	500
23	BP 13.5 4 300 2	13.5	110	300	4	430 O/D X20	6x25	400	700	140	3	75X250	500
Kindly Note :													All dimensions in mm.
1	All poles are polygonal in shape but 18 sided poles can be offered on request.												
2	All poles have only single longitudinal weld.												
3	All poles will be single hot dip galvanised.												
4	GI polygonal Poles of any other size & thickness can be made on request!												

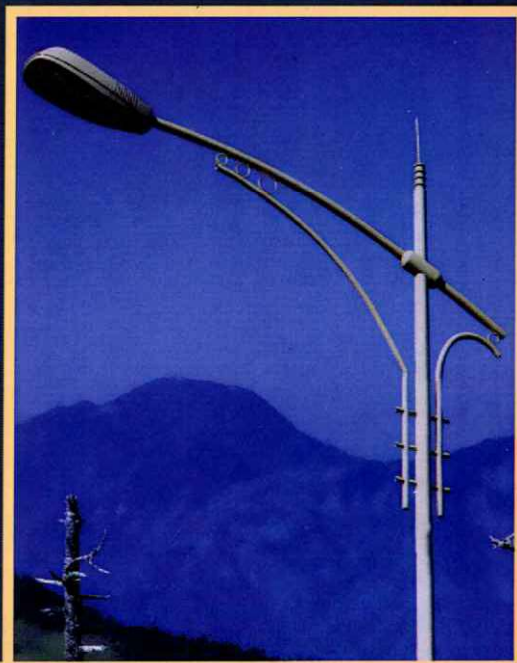
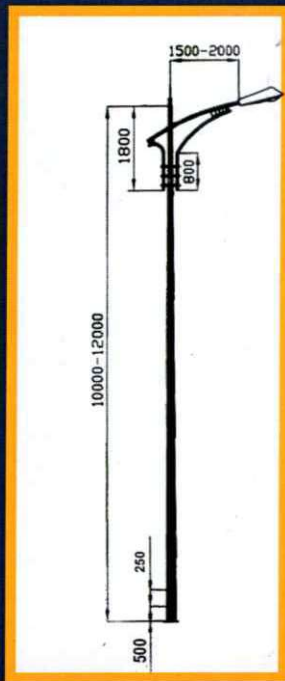
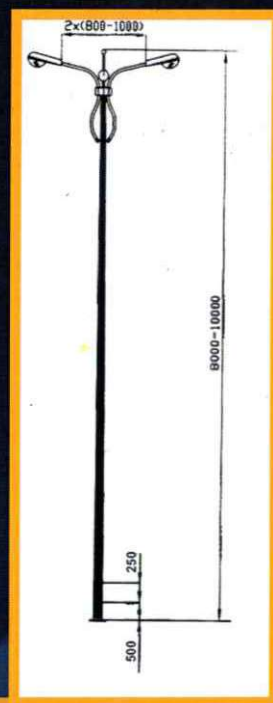
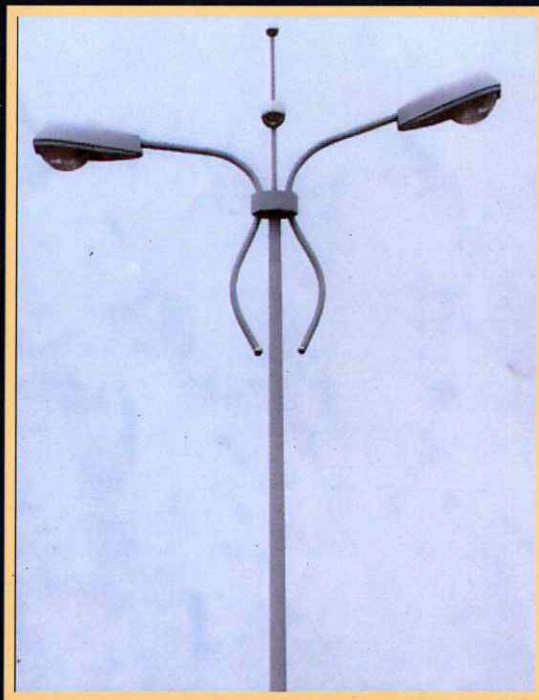
# Conical Poles & Brackets



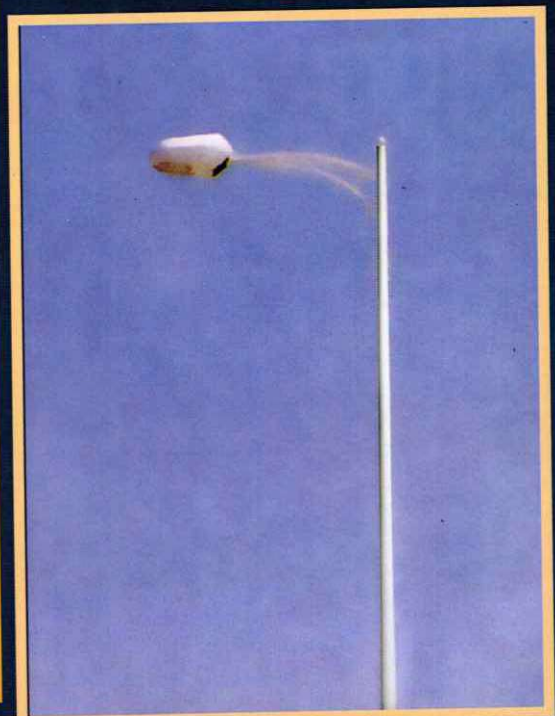
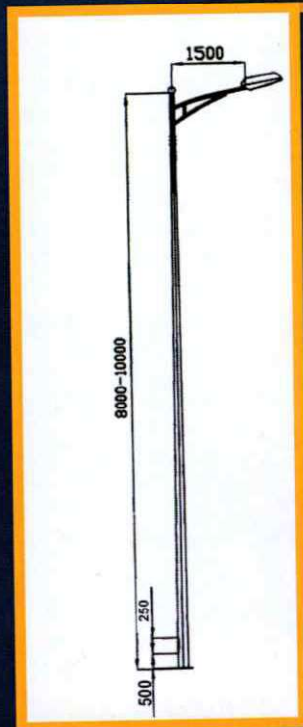
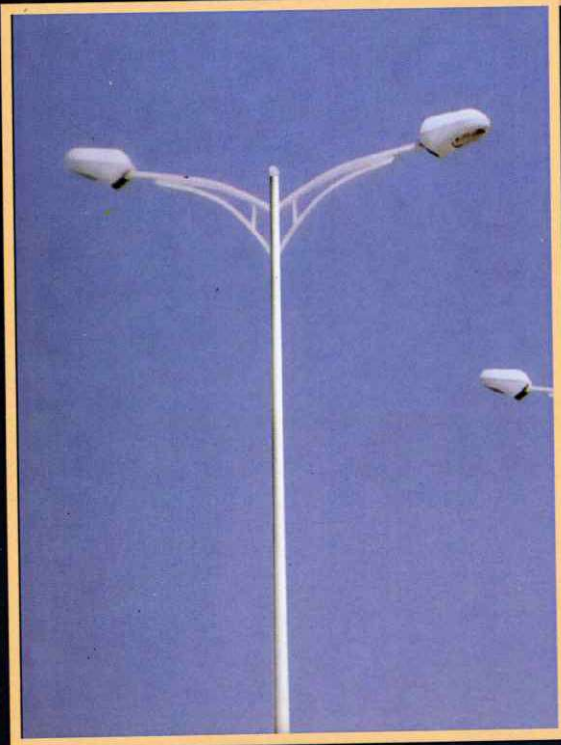
# Conical Poles & Brackets



# Conical Poles & Brackets

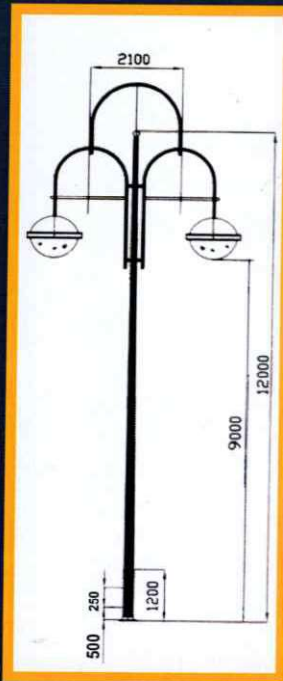
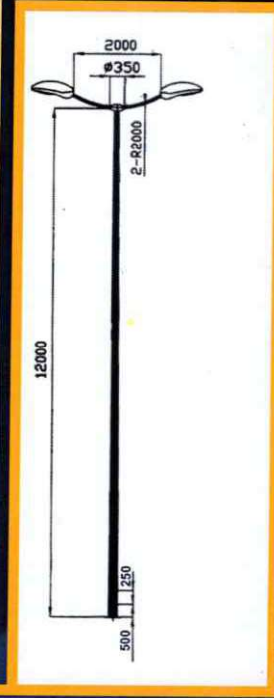
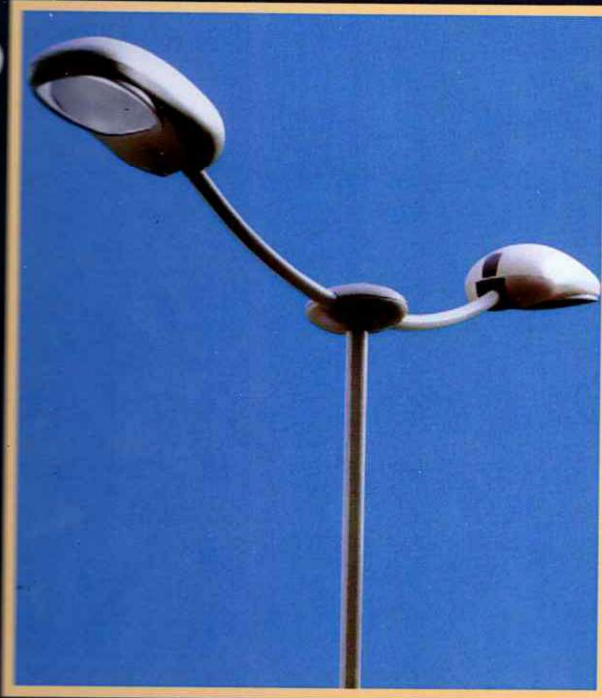


# Conical Poles & Brackets



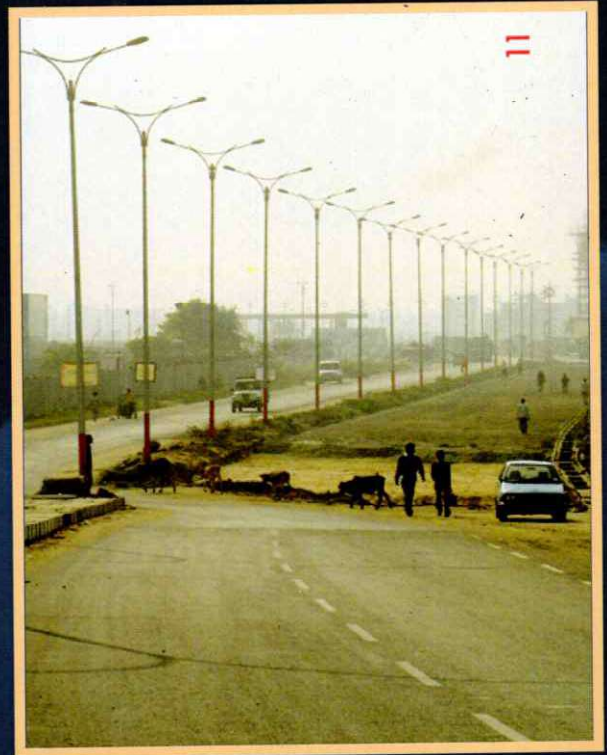
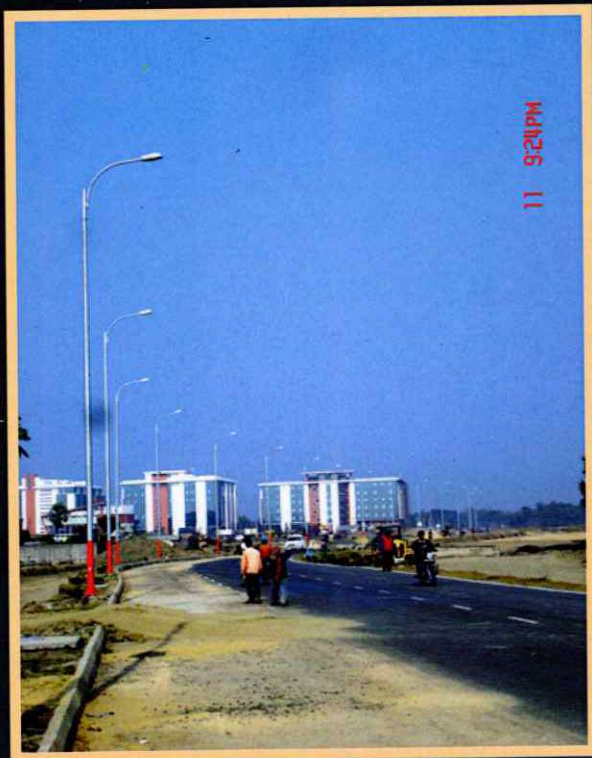
# Conical Poles & Brackets

(18)

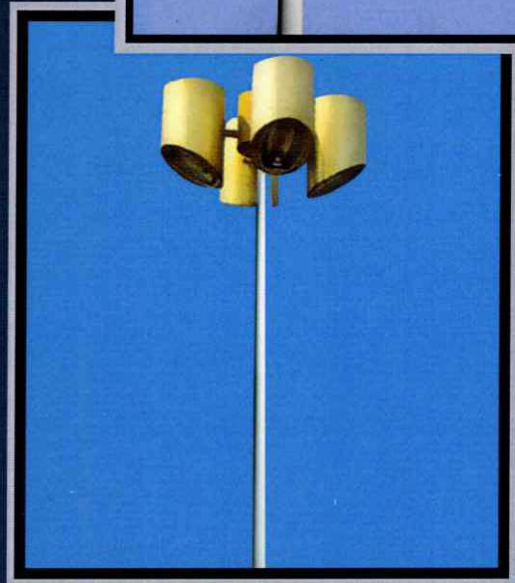
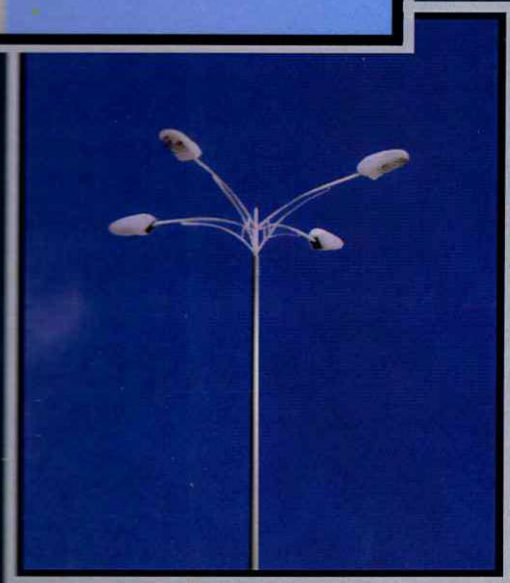
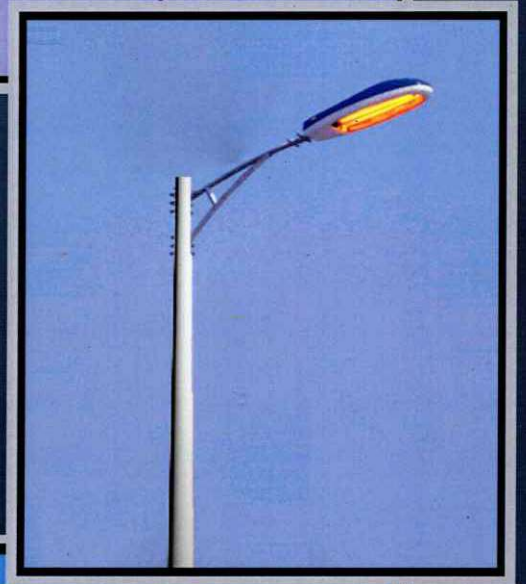
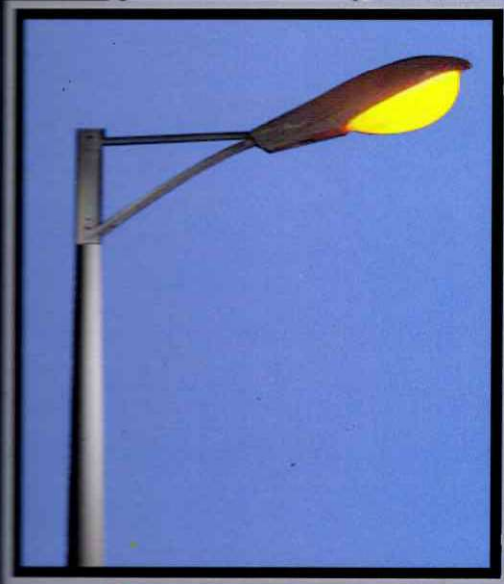
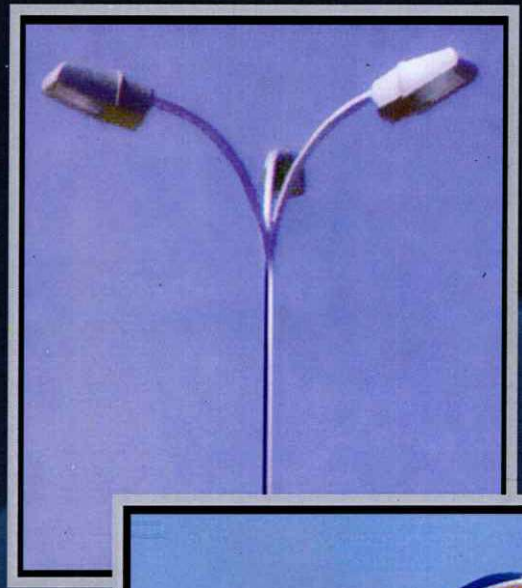
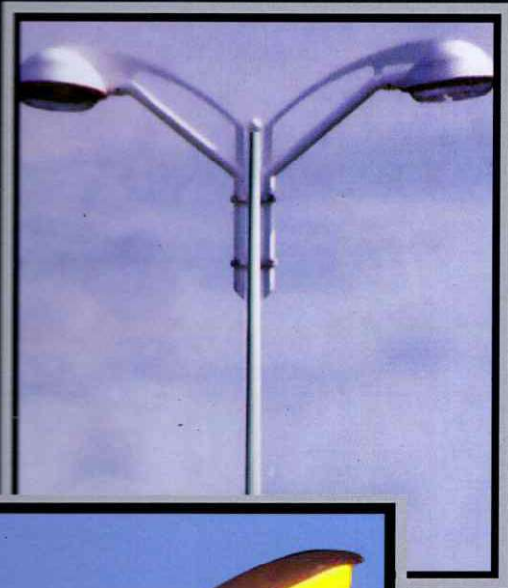


(19)

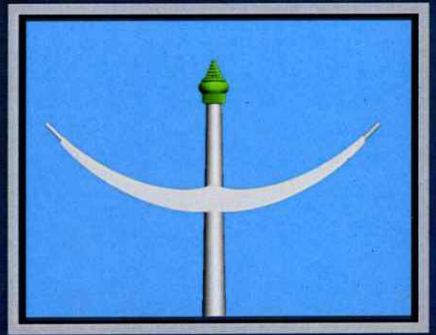
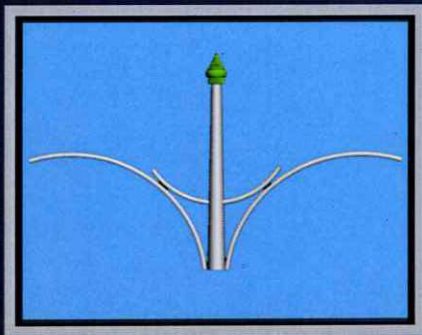
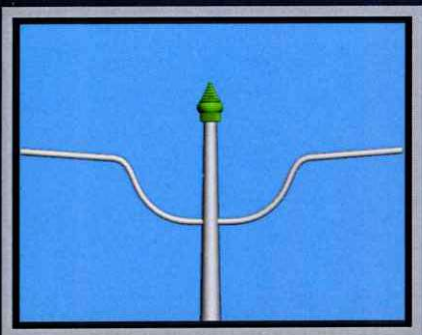
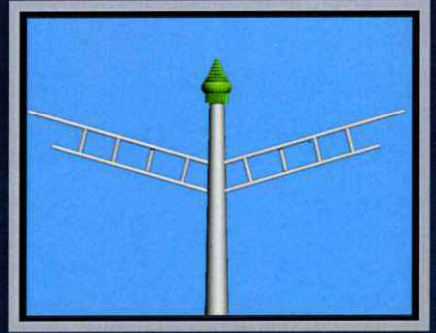
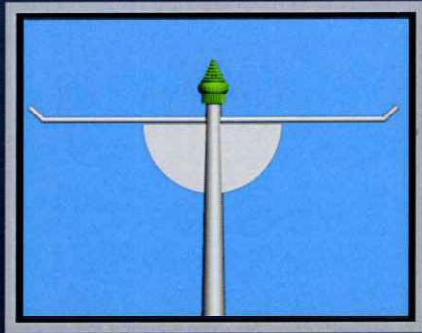
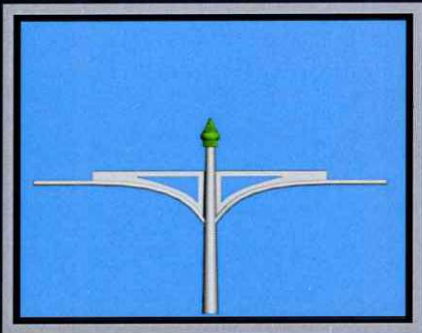
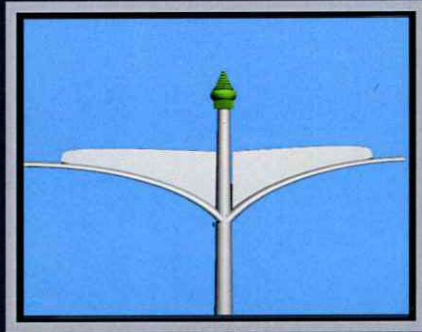
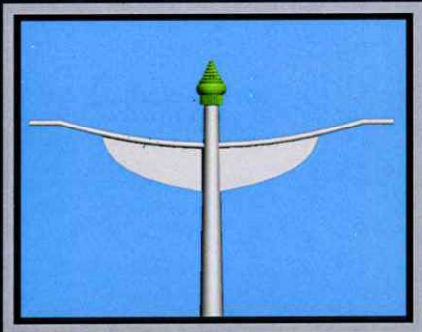
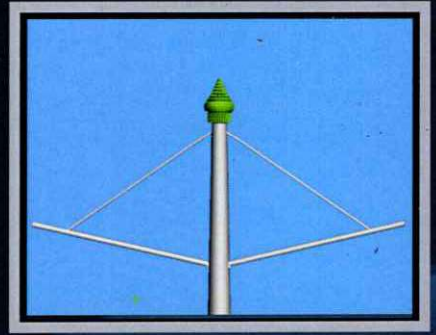
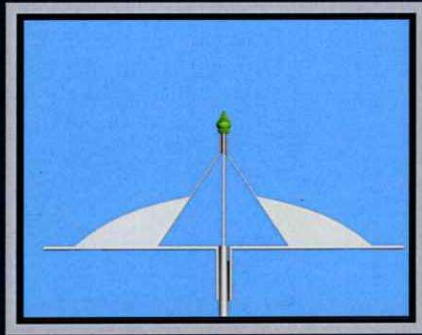
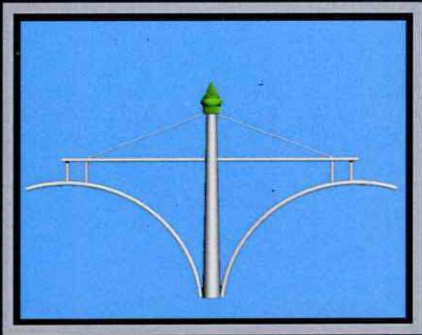
# Conical Poles & Brackets



# Conical Poles & Brackets



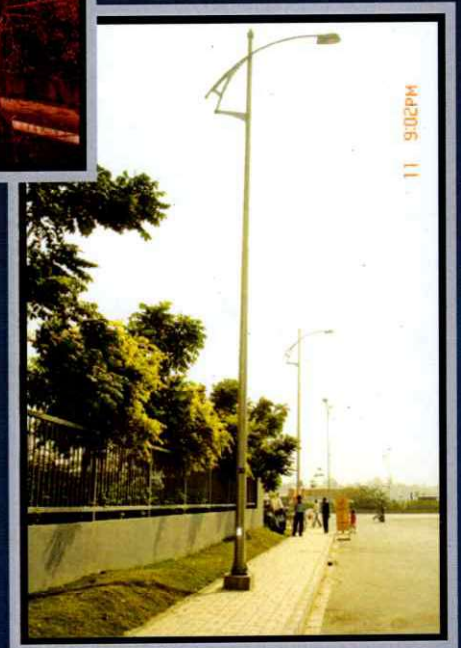
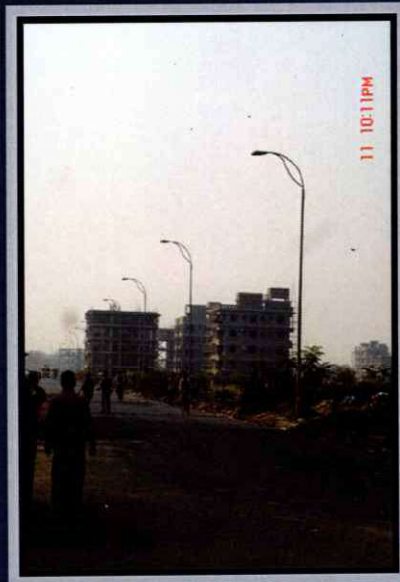
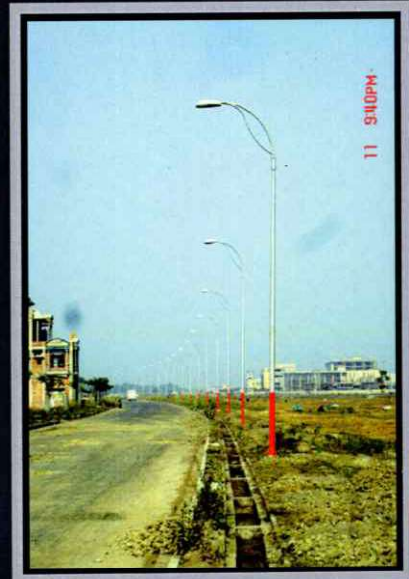
# DECORATIVE BRACKETS



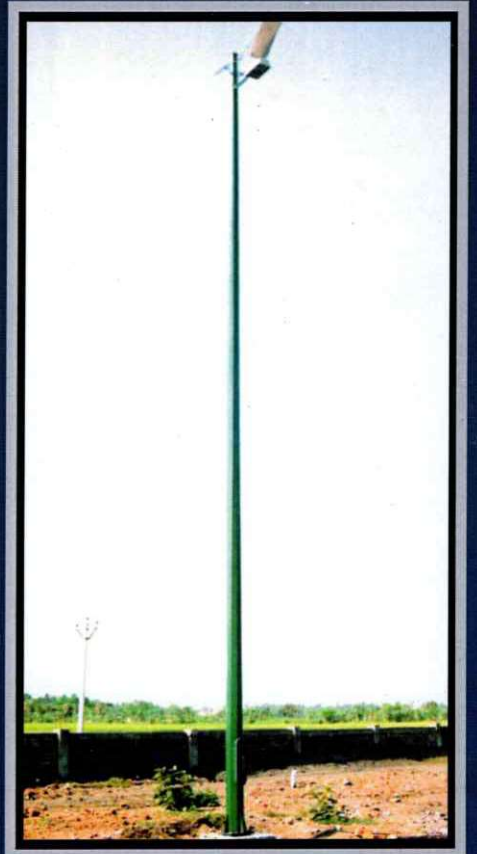
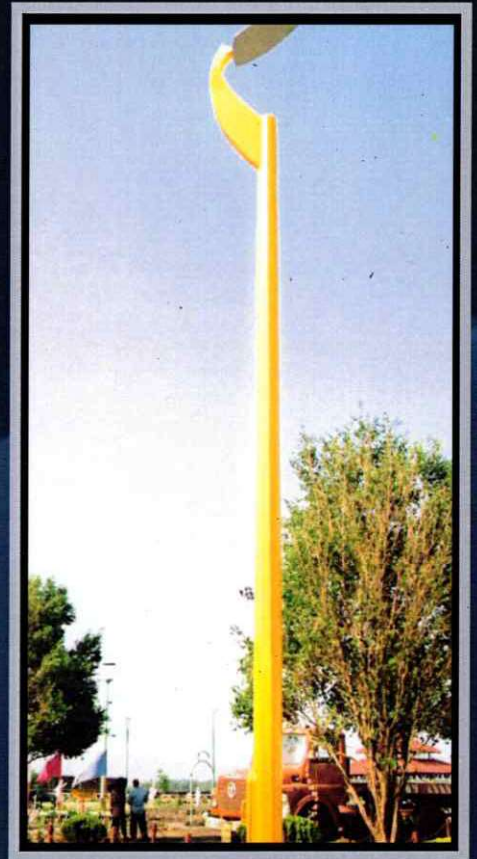
# Octagonal Poles & Brackets



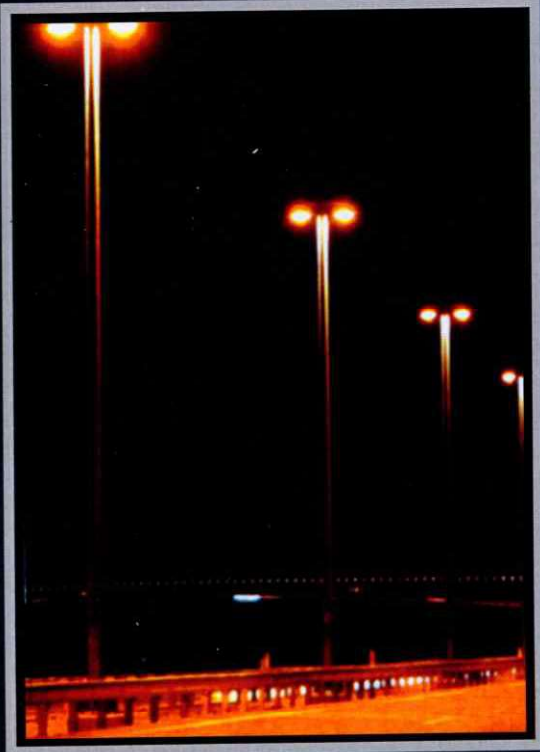
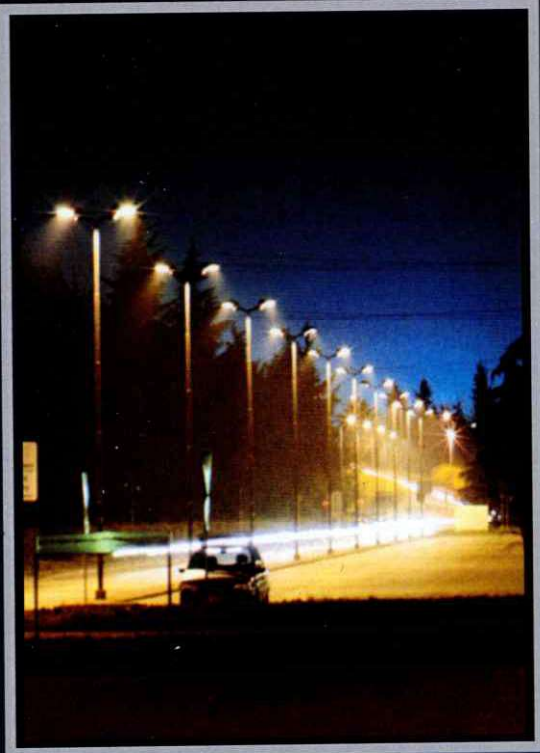
# Octagonal Poles & Brackets



# Octagonal Poles & Brackets



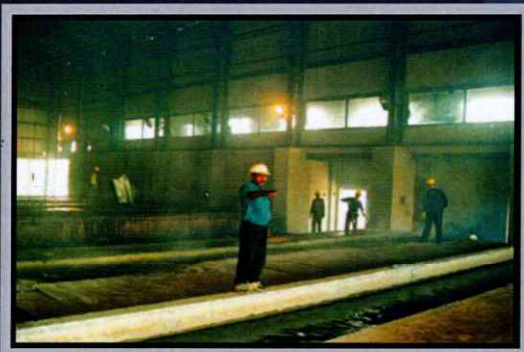
# Octagonal Poles & Brackets



# Asia's Largest Galvanizing Plant

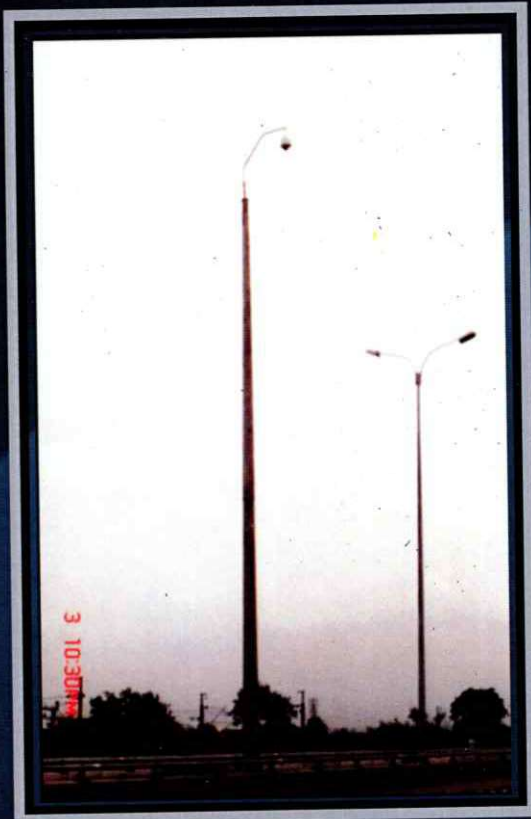
## SALIENT FEATURES

- Galvanizing Kettle 14.00m x 1.05m x 1.15m
- Installed Capacity 50,000 T.P.A
- Accredited to ISO 9001 & 14001
- 8 Nos. 3 Tonne Capacity Electric Hoist
- Material handling by Mobile Crane (8 Tonne capacity)
- All Pre- Treatment & Post Galvanizing Requisites
- Latest & Most Sophisticated Machinery



### GALVANIZING PRODUCT RANGE

Stadium Masts, High Mast, Sub Station Structure, Taper Round Pole, Transmission Towers, Communication Towers, Octagonal Poles, Swaged & Welded Poles, Railway Mast, Chanel Sleeper & Any type Fabricated Steel Article





Please Direct Your Enquiries to :

## **B.P. Projects Pvt. Ltd.**

167A, Vivekananda Road  
Kolkata - 700 006  
Phone : +91 33 2354 1283

E-mail : [bppkolkata@highmastbpp.com](mailto:bppkolkata@highmastbpp.com)

Visit us at : [www.highmastbpp.com](http://www.highmastbpp.com)

**Factory :**  
174/A, N. T. Road (Delhi Road)  
Baidyabati, Hoogly-712222  
West Bengal, India  
Phone : +91 33 32596080

**Contact Persons :**

<b>Mr. Navin Jaiswal</b>	<b>: 9830152614</b>
<b>Mr. Shallendra Gupta</b>	<b>: 9830363865</b>
<b>Mr. Arindam Kabiraj</b>	<b>: 9830628971</b>
<b>Mr. Subrata Basu</b>	<b>: 9830351698</b>



# **ENLIGHTENING INDIA**

---

**BPP HIGH MAST**

**And Accessories**

**KOLKATA**